

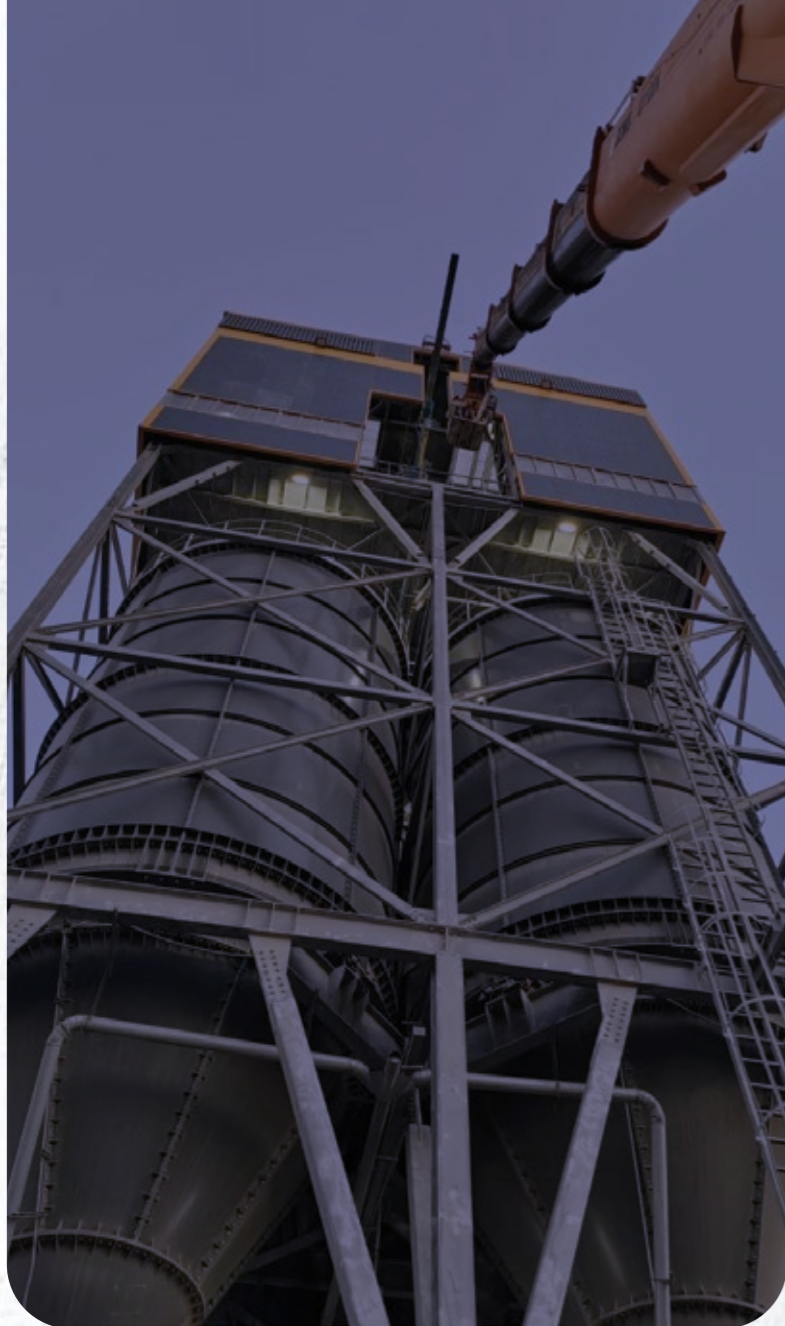


SAAD ALI ALESSA **METAL INDUSTRIES** **COMPANY**

SAMIF is a renowned name in the steel fabrication industry.

COMPANY PROFILE





Saad Ali Alessa Metal Industries
Company

TABLE OF CONTENT

ABOUT SAMIF	01
MD MESSAGE	03
OUR SERVICES	05
OUR PRODUCTS	06
CERTIFICATIONS	07
RESOURCES PERSONNAL	12
DESIGN & ENGINEERING	14
ENGINEERING SOFTWARE	15
ENGINEERING CAPABILITIES	17
GENERAL FABRICATION PROCESS	19
OUR MACHINES	20
PROJECT GALLERY	29

SAMIF COMPETITIVE ADVANTAGES

Teamwork and Honesty



Comprehensive Services



Large-scale Manufacturing
Capability



Customer-oriented
Approach

Innovation



Cutting-edge Technology



Diverse Product Range



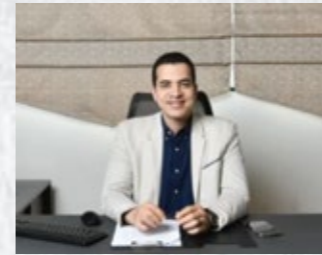
Saad Ali Alessa Metal Industries Company

Overview

- Located in Dammam 3rd Industrial city
- All products under single roof
- 80,000+ m² production space

About SAMIF

SAMIF is a renowned name in the steel fabrication industry, known for its exceptional construction solutions and commitment to quality. With a focus on innovation and customer satisfaction, SAMIF has established itself as a key player in delivering high-quality steel products for various industries.



Saad Ali Alessa Metal Industries Company

It is my privilege to lead SAMIF, a pioneering force in the metal industries sector. Our state-of-the-art facilities, combined with a highly skilled workforce, transform raw materials into precision-engineered components that exceed client expectations. We operate with an unwavering commitment to safety, sustainability, and continuous improvement, in full alignment with Saudi Vision 2030.

We are strategically positioned for continued growth by embracing advanced technologies that enhance our service capabilities and contribute to the Kingdom's economic diversification. With the dedication of our talented employees and the trust of our valued partners, we will sustain our drive for innovation, operational excellence, and sustainable expansion — reinforcing our role as a key contributor to the advancement of Saudi Arabia's industrial sector.

MD. Abdelrahman Mohamed

COLLABORATE + SUPPORT

SAMIF collaborate and support all sectors, providing innovative solutions to their heavy metal infrastructure needs.

WE GOT IT ALL FOR YOU

SAMIF designs, fabricates and maintains heavy to heaviest steel works both in-plant or on-site, we got it all for you.

WE SERVE

- Oil and Gas
- Petro-Chemical
- Power Generation
- Water Treatment Plants
- Infrastructure
- Mining
- Fertilizer
- Offshore Industries
- Real Estate Developments Industries
- Other Industries



OUR SERVICES

- Engineering and Design
- Metal Fabrication
- Treatment and Surface Coating
- Site Erection
- Site Management
- General Maintenance





OUR CUSTOM WE HELP THEM.

We fabricate highly customized products to provide solutions to cater the changing needs of our customers.



OUR PRODUCTS

- Structure Steel
- Pressure Vessels
- Shop Fabricated Tanks
- Site Erected Tanks
- Pipe Spools
- Industries Skids
- Boilers
- Heat Exchangers
- Other Plant work
- Any customized heavy steel fabricated products

ASME CERTIFICATIONS



We are with **ASME's** disposition

to promote the art, science & practice of multidisciplinary engineering and allied sciences around the globe.

SAMIF is aligned

with international standards that support innovation and provide solutions to global challenges.

I-S-O



D-U-N-S



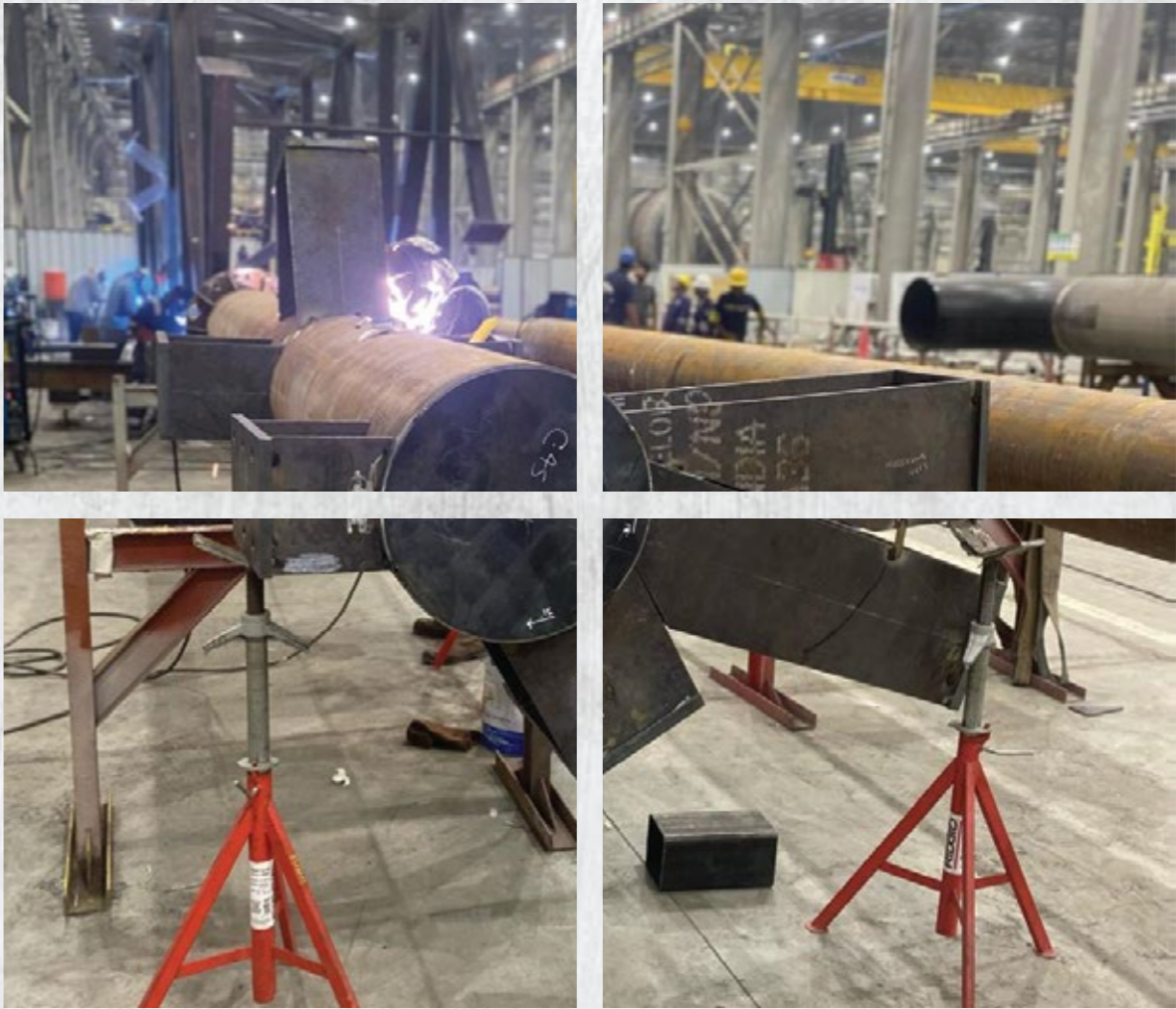
D-U-N-S® Registered™ Certificate

Company Name:	SAAD ALI ALESSA METAL INDUSTRIES COMPANY	  Dun & Bradstreet Saudi Arabia Ltd
Address:	Building No. 3 7727 - 3rd Industrial City, P.O.Box 2224 Dammam, 34856 Ash Sharqiyah, Saudi Arabia	
Place of Issue:	Saudi Arabia	
Business Registration Number:	2050105736	
D-U-N-S® Number:	44-899-0469	
Validity:	From 11-Aug-25 to 10-Aug-26 One Year Subscriber	

*The fact that this business is a member of D-U-N-S® Registered™ should not be construed as suggesting that credit or any other financial or business transaction should be approved, denied, restricted or delayed. It only signifies the business has submitted sufficient information to be a D-U-N-S® Registered™ member.

9com's

6000000136:	Sleeve; Pipe; Two Halves;Pipe Repair; CS;
6000002521:	(INSP) VESSEL; PRES.; MAX.WALL THK OF 19 MM
6000002522:	(INSP) VESSEL; PRES.WALL THK OF 38 MM
6000002480:	(INSP) TANK; FIELD ERECTED ATMOSP. & LOW PRESS.
6000002523:	(INSP) VESSEL; PRESSURE;HIGH ALLOY; NON FERROU
6000000663:	Structure; Steel
6000010096:	Tank; Wastewater all wastewater
6000002479:	Tank; Shop Fabricated; 32 SAMS - 30;
6000000025:	Spool; Pipe; BW; Fabricated; Any Metal
6000000024:	Spool; Pipe; All Sizes; Flanged; BW;FT;
6000002478:	STACK;FLARE EXHAUST

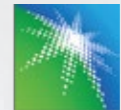
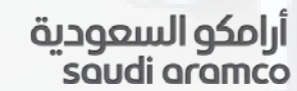


CPA
46CPA23126

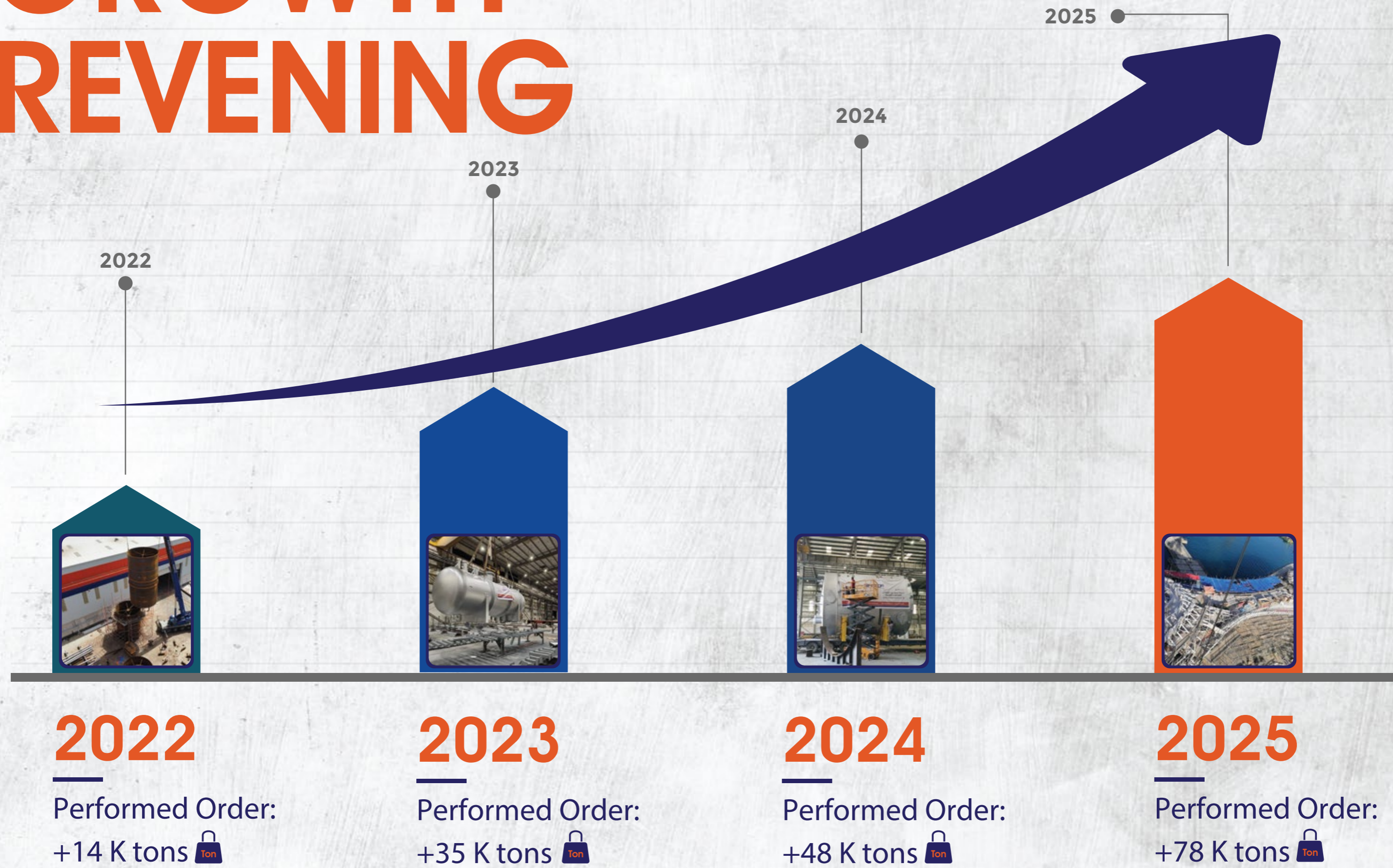
New Corporate Procurement Agreement with Saudi Aramco

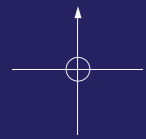
- Tanks
- Structure Steel
- Pipe Spool Fabrication
- Pressure Vessel

APPROVED VENDOR




GROWTH REVENING





RESOURCES PERSONNAL

ROBOTICS	80,600	550+	60,000	Certified	Certified	Qualified	D-U-N-S
							



CURRENT MANPOWER 550+

BUSINESS PARTNERS



نيوم NEOM



US Army Corps
of Engineers®





DESIGN & ENGINEERING

- Structural Steel Connection (Light, Medium & Heavy) Design.
- Pressure Vessels (CS, SS & Alloy Steel) Design.
- Storage Tanks Design.
- Shop Fabricated Tanks Design.
- Heat Exchanger Design.
- Creation of piping spool detailing.
- Assisting Estimation Department with Preliminary Calculation.



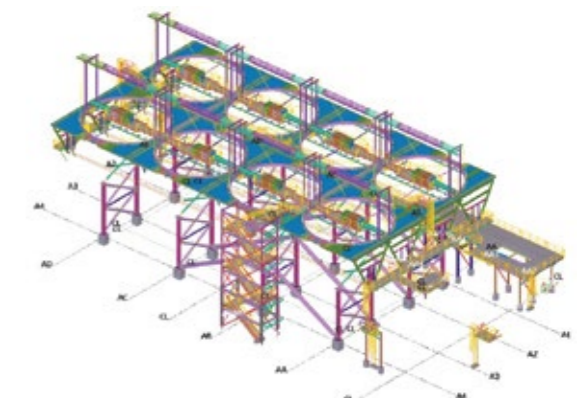
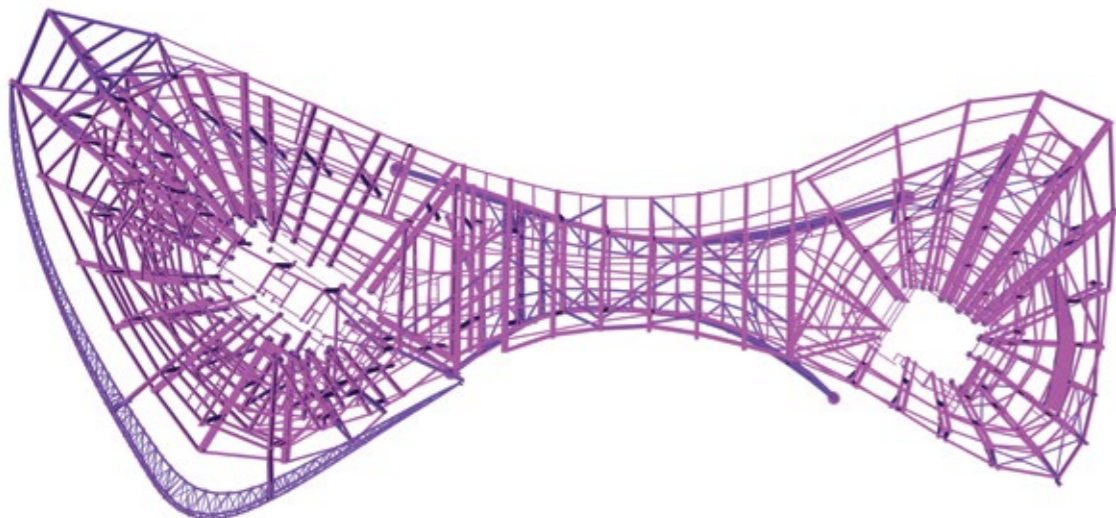
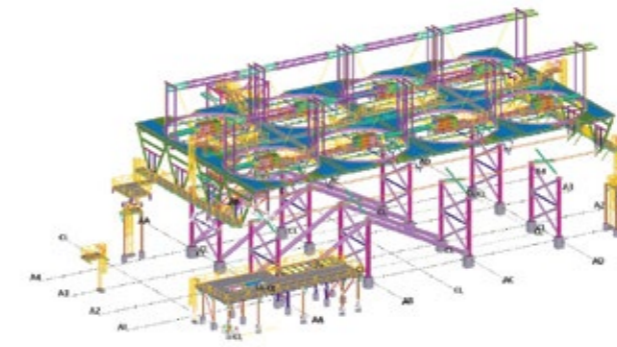
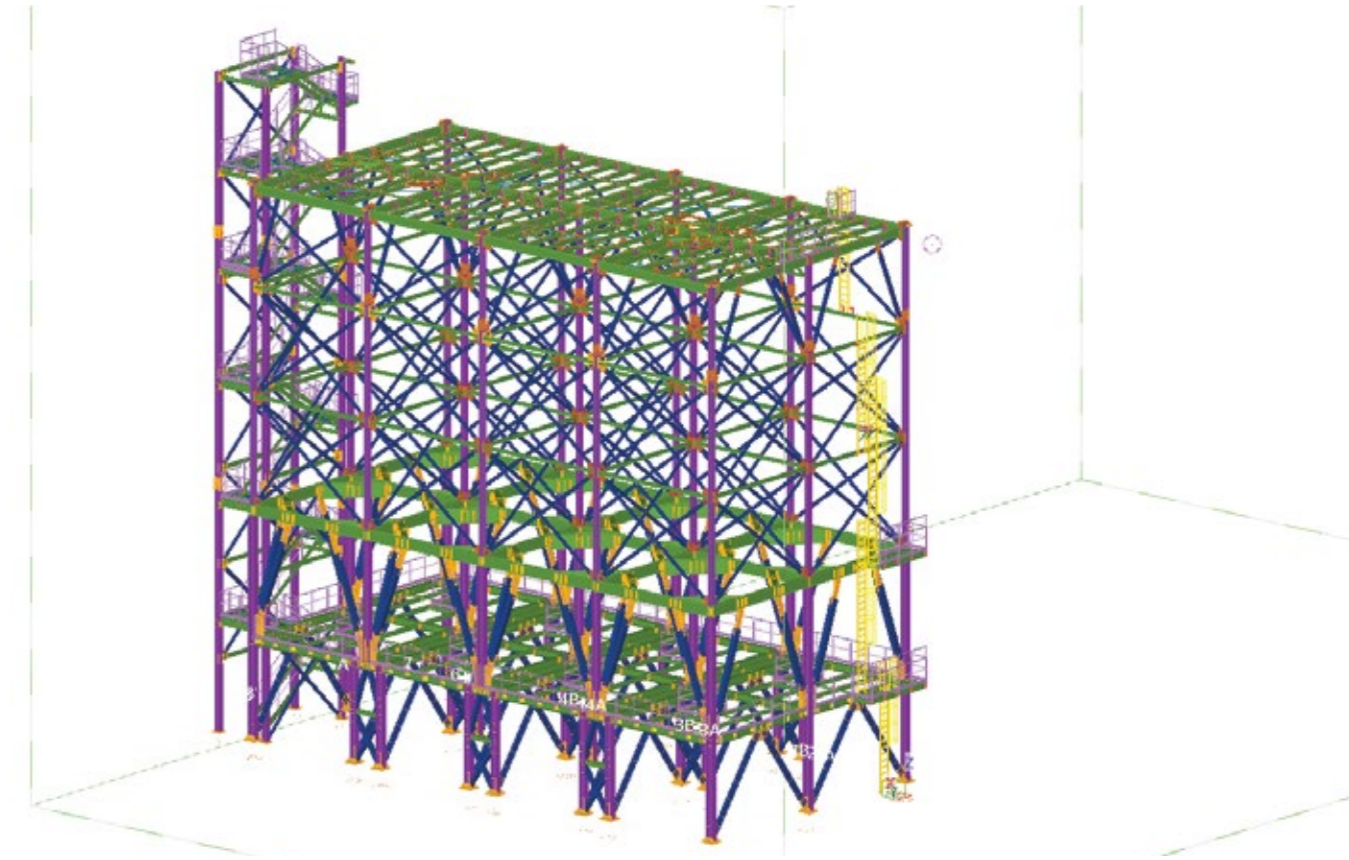
ENGINEERING SOFTWARE



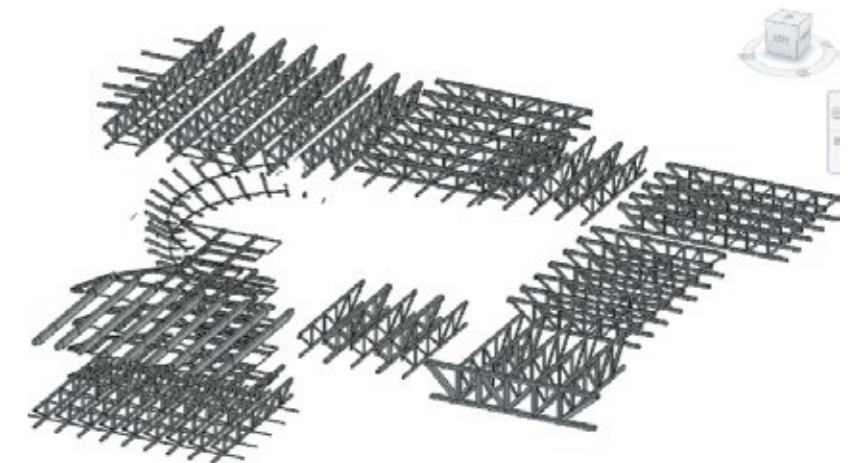
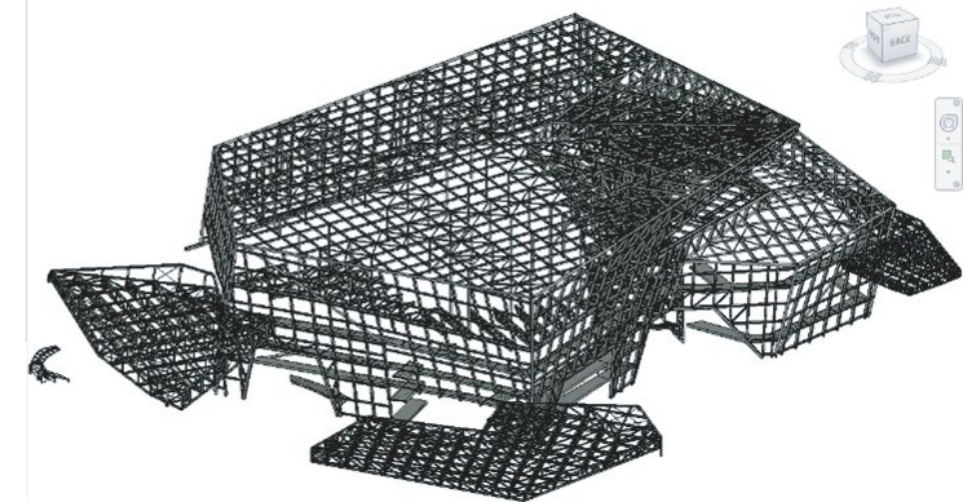
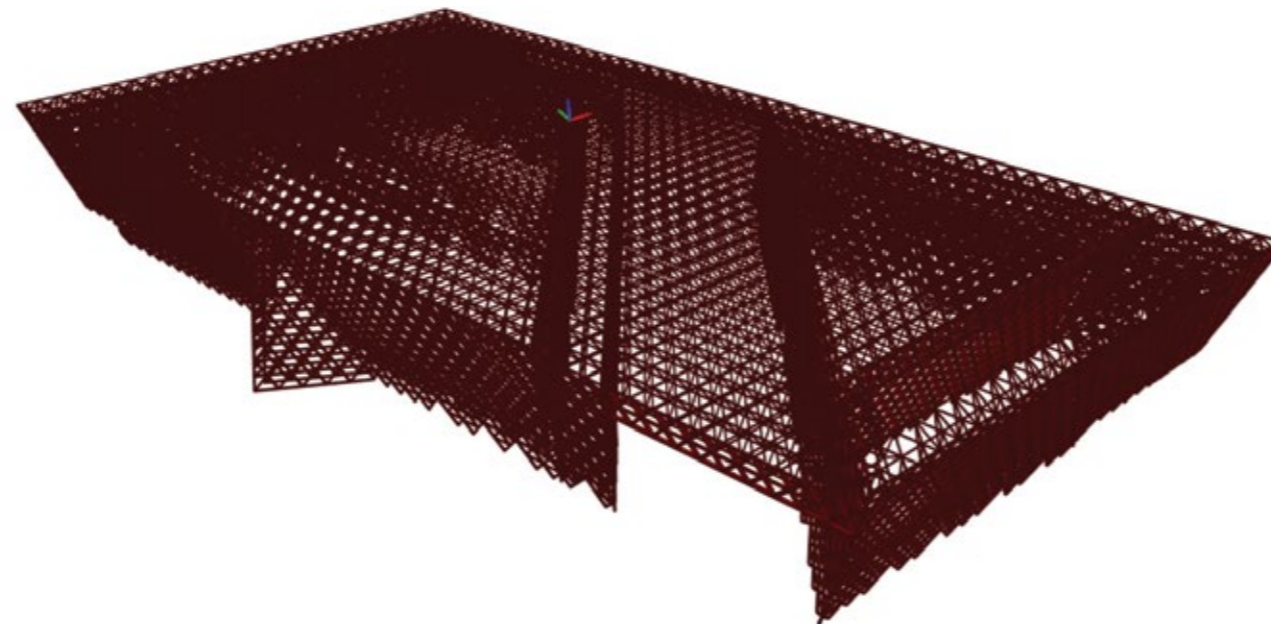
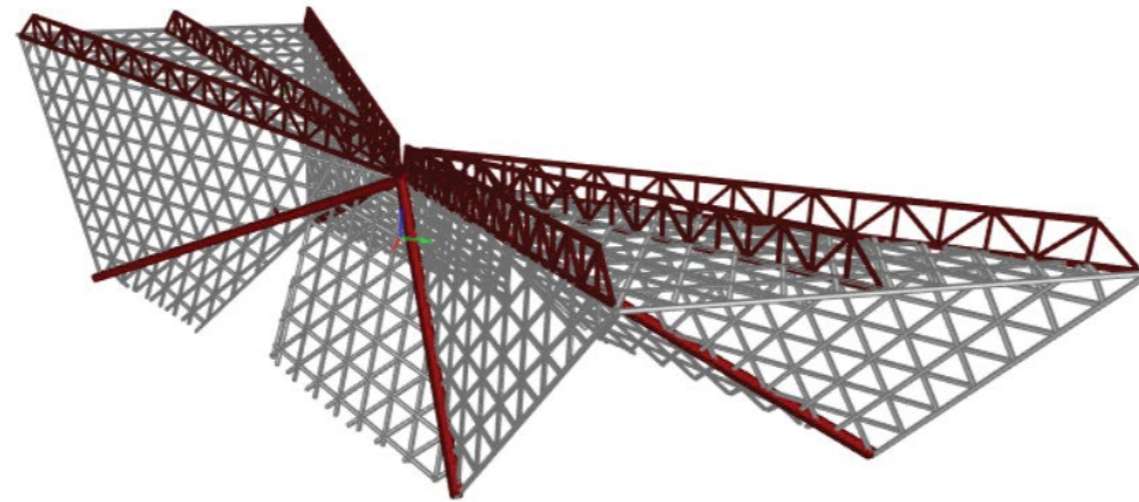
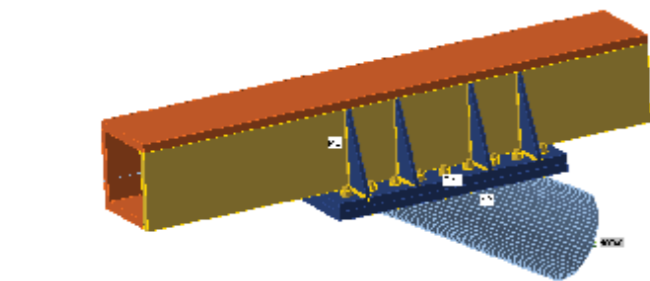
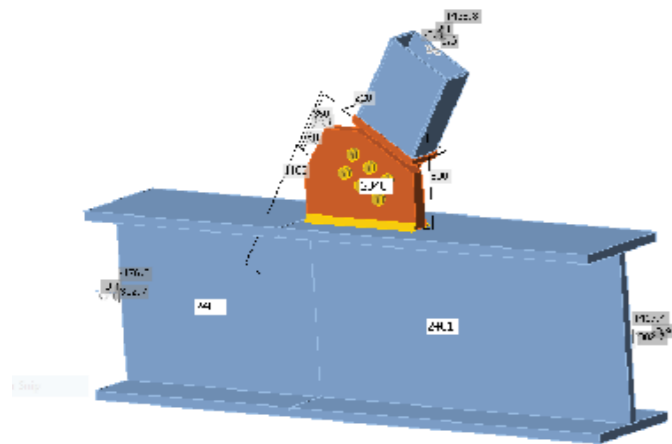
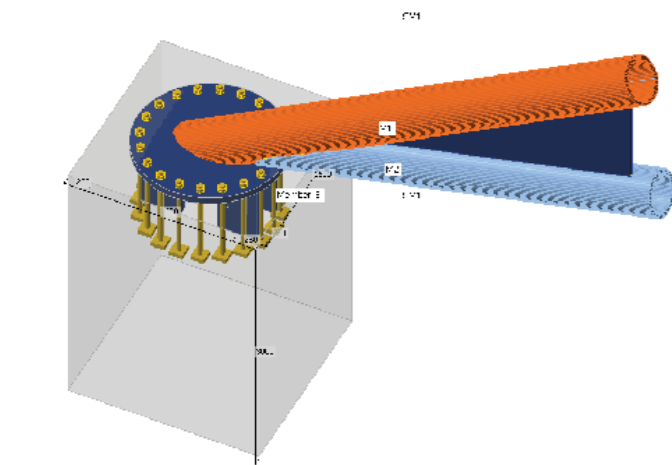
ENGINEERING CAPABILITIES

For Engineering, we are using the latest Industrial softwares:

- CADMATE 2021
- TEKLA - SERVICE PACK 2
- SOLIDWORKS PREMIUM 2022
- BENTLEY STRUCTURAL ENTERPRISE



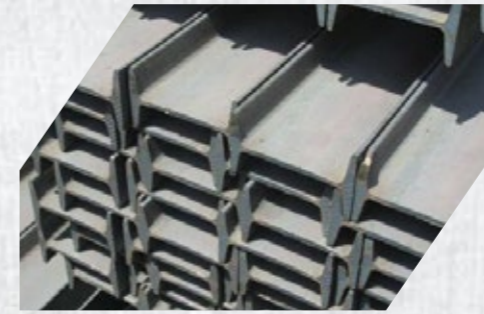
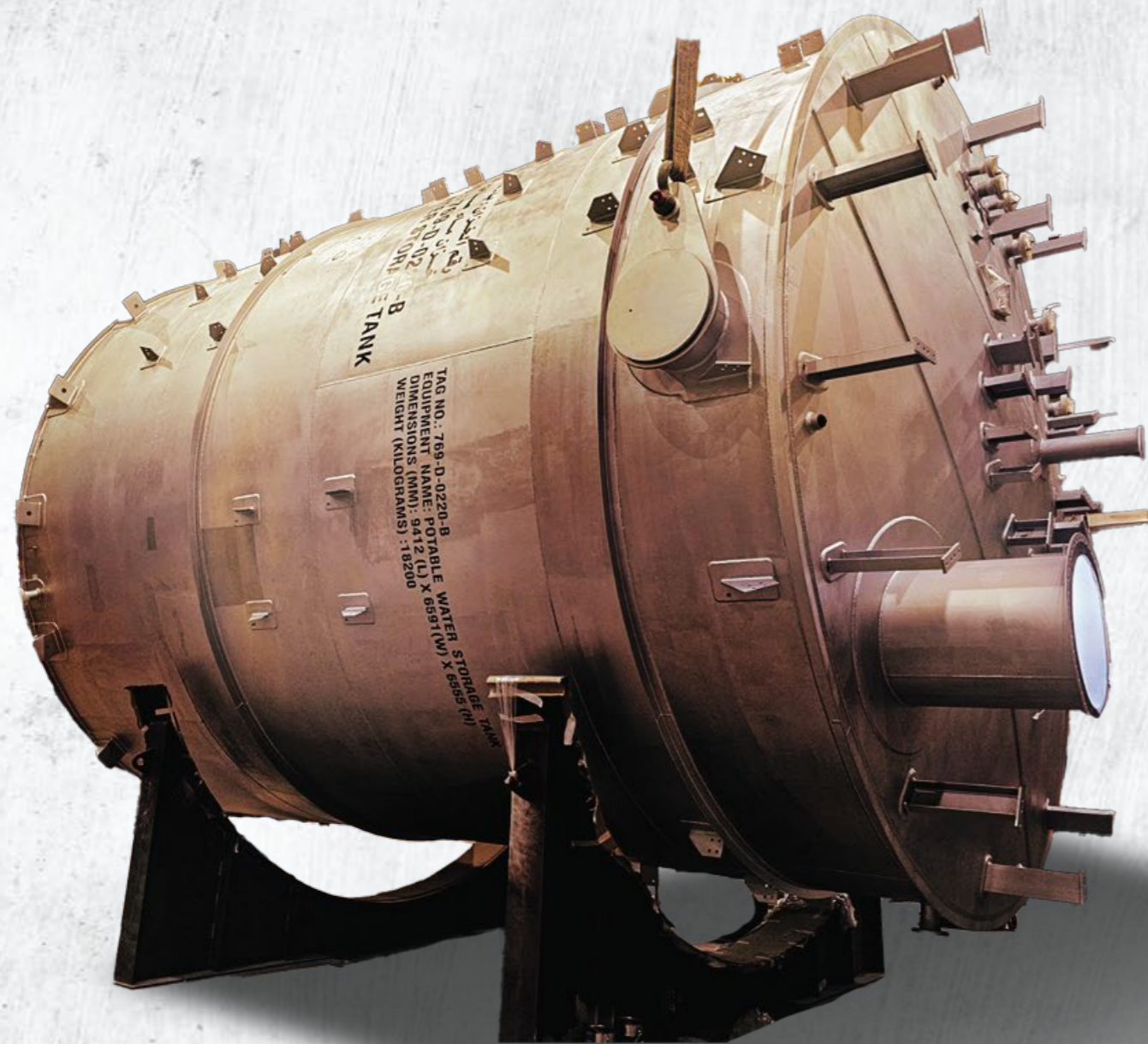
ENGINEERING CAPABILITIES



ENGINEERING



GENERAL FABRICATION PROCESS



Steel Material
Distribution



Preparation Process
Cutting / Drilling



Engineering Detailing
Connection Design



Fabrication
Assembly / Welding



Quality Control



Blasting &
Painting



Fireproof Coating



Shipping &
Site Delivery

OUR MACHINES

AUTOMATION + PERFECTION

Robotic assembling and welding line simplifies the whole production process and cuts the manufacturing time in half.

To ensure accuracy, we pre-program from the software, add codes then controls the movement of the production equipment.

PLATE PROCESSING

Functions & Capacities:

Drilling	: 10 to 100 mm
Milling	: 10 to 80 mm
Tapping	: M12 to M30
Face Milling	: Various
Scribing	: for marking

Plate Size to work o

Thickness	: 6 to 100 mm
Width	: 3000 mm maximum
Length	: 3000 mm maximum



PLATE CUTTING, PLASMA & OXYFUEL

Functions & Capacities:

Plasma cut	: up to 70 mm
Double Plasma Torch	: Yes
Oxyfuel cut	: up to 300 mm
Double Oxyfuel Torch	: Yes
Oxyfuel Angle Cut	: + 45° / - 45°
Plasma Marking	: Yes

Plate Size to work o

Width	: 3000 mm maximum
Length	: 12000 mm maximum



STRUCTURE PROFILE SHAPES

Functions & Capacities:

Plasma cut	: up to 40 mm
Plasma Angle Cut	: + 45° / - 45°
Stitch cutting	: Yes
Inkjet Marking	: Yes
Able to cut any profile on the above specified shapes.	

Shapes & Parameters:

IPE	: 100 - 750 mm
HE	: 100 - 1000 mm
UPN	: 100 - 400 mm
BOX	: 100x100 - 600x400
Maximum Length	: 12 meters
Material Weight	: up to 12 Tons

ROBOTIC TACKING, WELDING & ASSEMBLY

Functions & Capacities:

Beam Parameters:

Beam Height	: 150 to 1100 mm
Beam Width	: 80 to 500 mm
Beam Length	: 3 to 16 meter

Types of Beam:

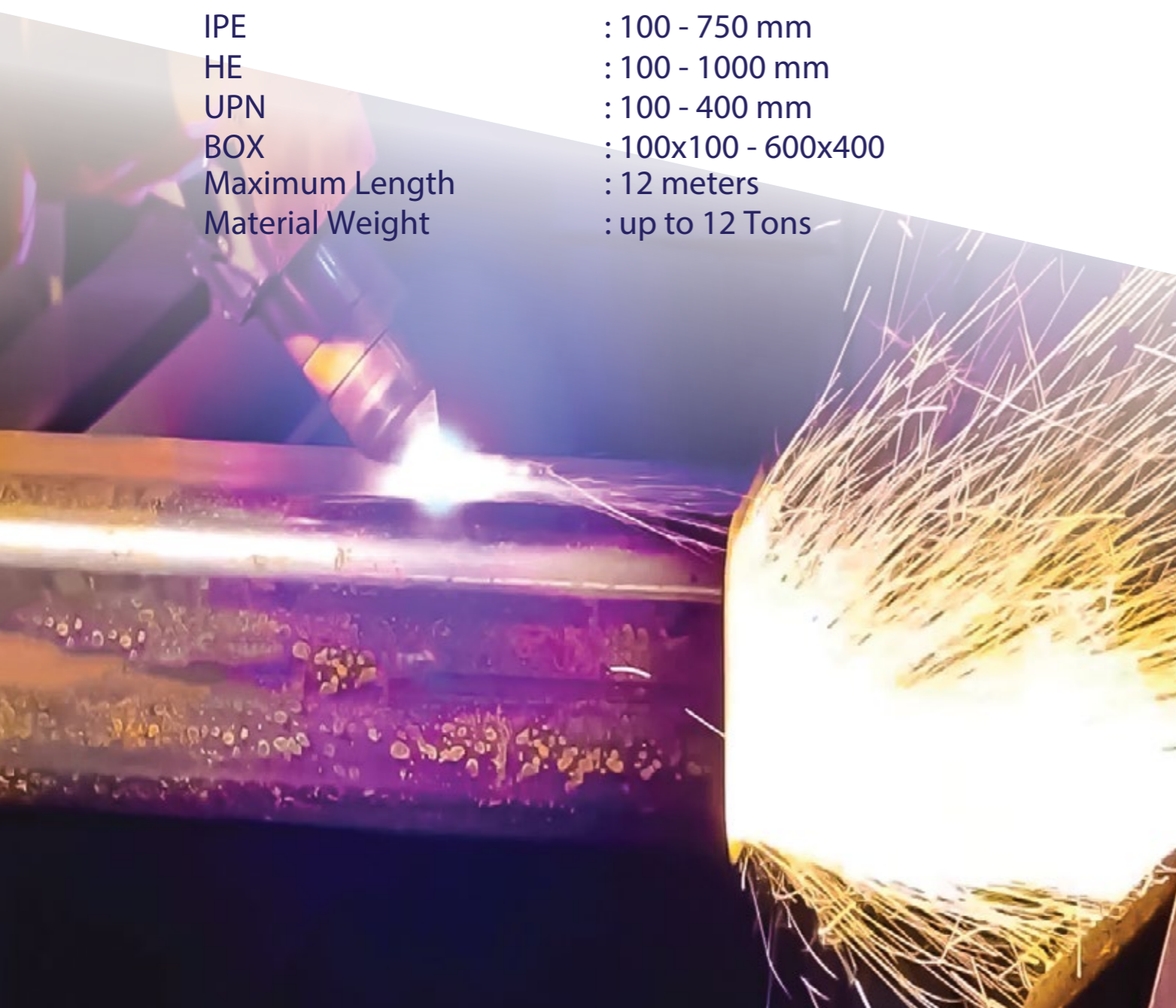
- * Rectangular / Square Tubes
- * H Beam
- * Tapered / Welded H – Beam
- * Corrugated SIN Beams
- * U - Profiles (Channels)

Available ADD parts:

- * Plates
- * Tubes
- * Cleats (H & I)
- * Angles
- * U - Profiles
- * T - Parts

Functions:

- Automatic Tacking & Welding of parts to the beam
- MAG Welding (Single & Multilayer)
- Pre-heating of end plates
- Auto measurements and tolerance compensation



HYDRAULIC SECTIONS & PIPE BENDING

Functions & Capacities:

Flat	: up to width 200 & thick 35 mm
Square Bar	: up to 65 mm
Round Bar	: up to 75 mm
Angle	: 100x100x12 mm
Tee	: 100x100x12 mm
Rectangular Tube	: 50x120x4
Square Tube	: 80x6
Round Tube	: 141x3.4
Heavy Pipe	: 114x6
UPN Easy way	: 180 maximum
UPN Hard way	: 120 maximum
IPE Easy way	: 180 maximum
IPE Hard way	: 120 maximum
H Beam Easy way	: 120 maximum
H Beam Hard way	: 100 maximum



PIPE PROFILING

Functions & Capacities:

Plasma cut	: up to 31 mm
Plasma Angle Cut	: + 45° / - 45°
Oxyfuel cut	: up to 150 mm
Oxyfuel Angle Cut	: + 70° / - 70°
Inkjet Marking	: Yes
Punch Marking	: Yes

Plate Size to work o

Minimum Diameter	: 75 mm
Maximum Diameter	: 1524 mm
Maximum Pipe Length	: 12000 mm



COLUMN & BOOM 7X7

Functions:

SAW Welding

Capacities:

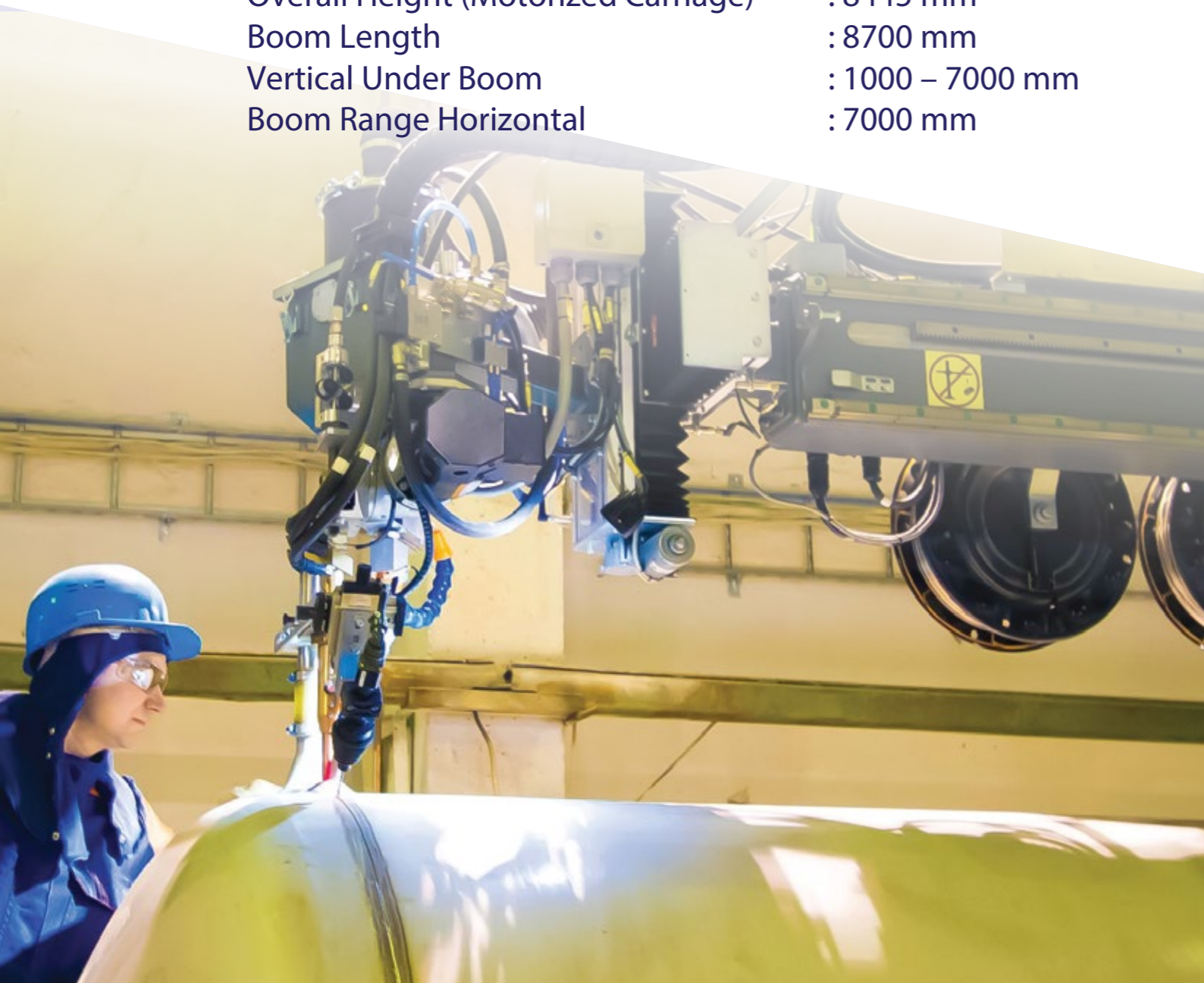
A smooth 360-degree lockable rotation

Overall Height (Motorized Carriage) : 8445 mm

Boom Length : 8700 mm

Vertical Under Boom : 1000 – 7000 mm

Boom Range Horizontal : 7000 mm



HYDRAULIC PLATE ROLLING

Functions & Capacities:

Thickness : up to 210 mm

Width : 3000 mm maximum

Minimum Rolling Diameter : 1210 mm

Rolling Speed : 6000 mm/minute



CNC PRESS BRAKE

Functions & Capacities:

Minimum Plate Thickness	: 1 mm
Maximum Plate Thickness	: 60 mm
Maximum Bending Length	: 6100 mm
Bending Force	: 880 Tons
Maximum Pressure	: 275 Bar

BEAM WELDING LINE BUILT-UP SECTION

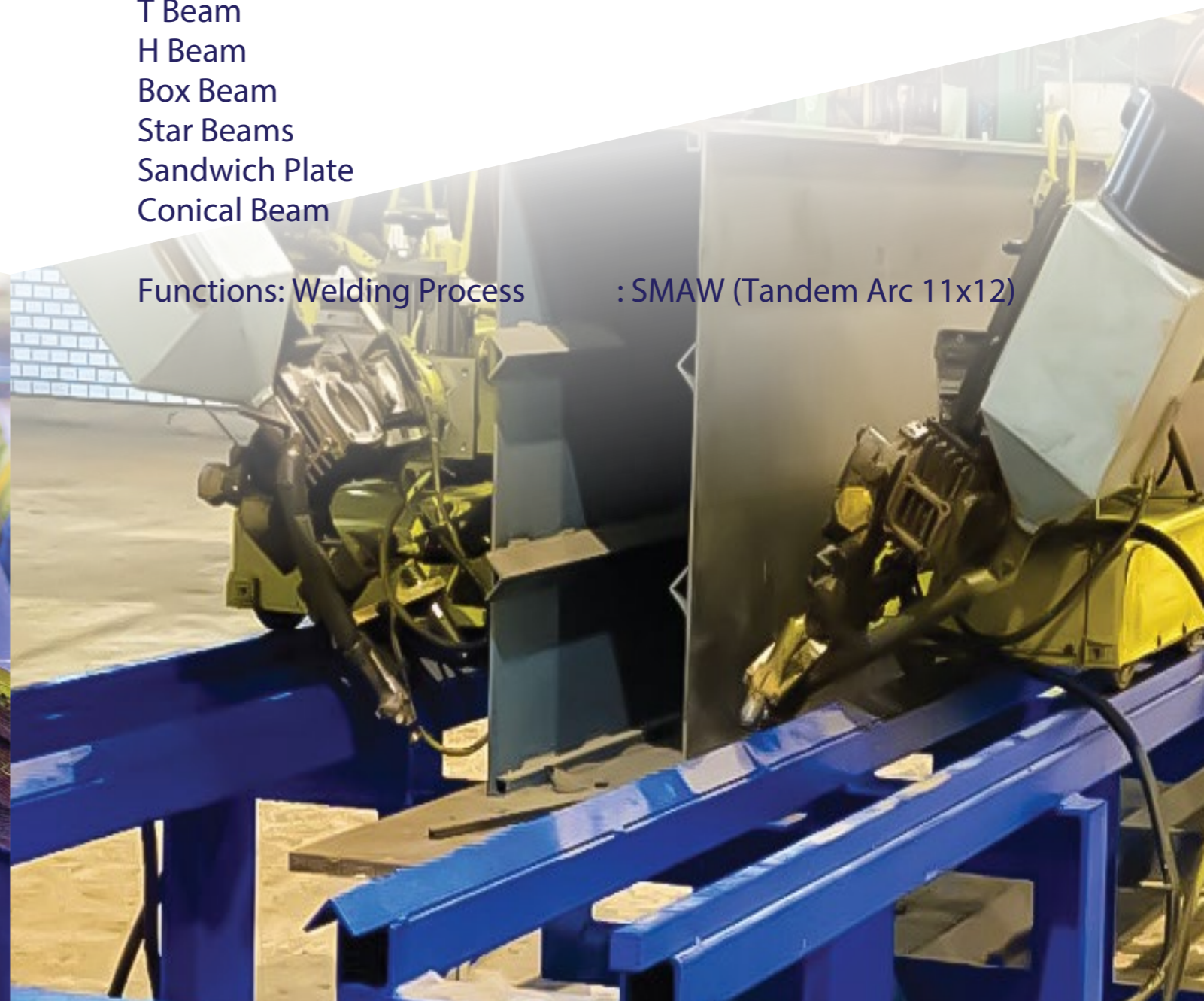
Functions & Capacities:

Web Thickness	: 4 to 50 mm
Web Height	: 200 to 3000 mm
Flange Thickness	: 6 to 60 mm
Flange Height	: 150 to 1500 mm
Beam Length	: 4 to 20 meter

Types of Beam:

T Beam
H Beam
Box Beam
Star Beams
Sandwich Plate
Conical Beam

Functions: Welding Process : SMAW (Tandem Arc 11x12)



IRON WORKER

Functions & Capacities:

Shearing

Flat Bar	: Width 500x Thk. 20 mm
Angle Iron	: Width 150 x Thk. 12 mm
Round Bar	: 8 to 50 mm
Square Bar	: Sq. 8 to Sq. 50 mm
Channels	: UPN 40 to 180
I Beams	: 80 to 180

Punching

Punch Diameter	: 8 to 24 mm
Can punch in Web as well as Flange of Channels & Beams	

Notching

Square Notch & Triangular Notch	
Notch Width 65 mm maximum in 13 mm plate	
Can punch in Flange of Channels & Beams	



CNC SHEARING

Functions & Capacities:

Shearing Length	: up to 3000 mm
Shearing Width	: up to 1000 mm
Thickness	: 25 mm CS
Thickness	: 12 mm SS
Meter Cutting	: Yes by marking cutting line on plate and with laser reference

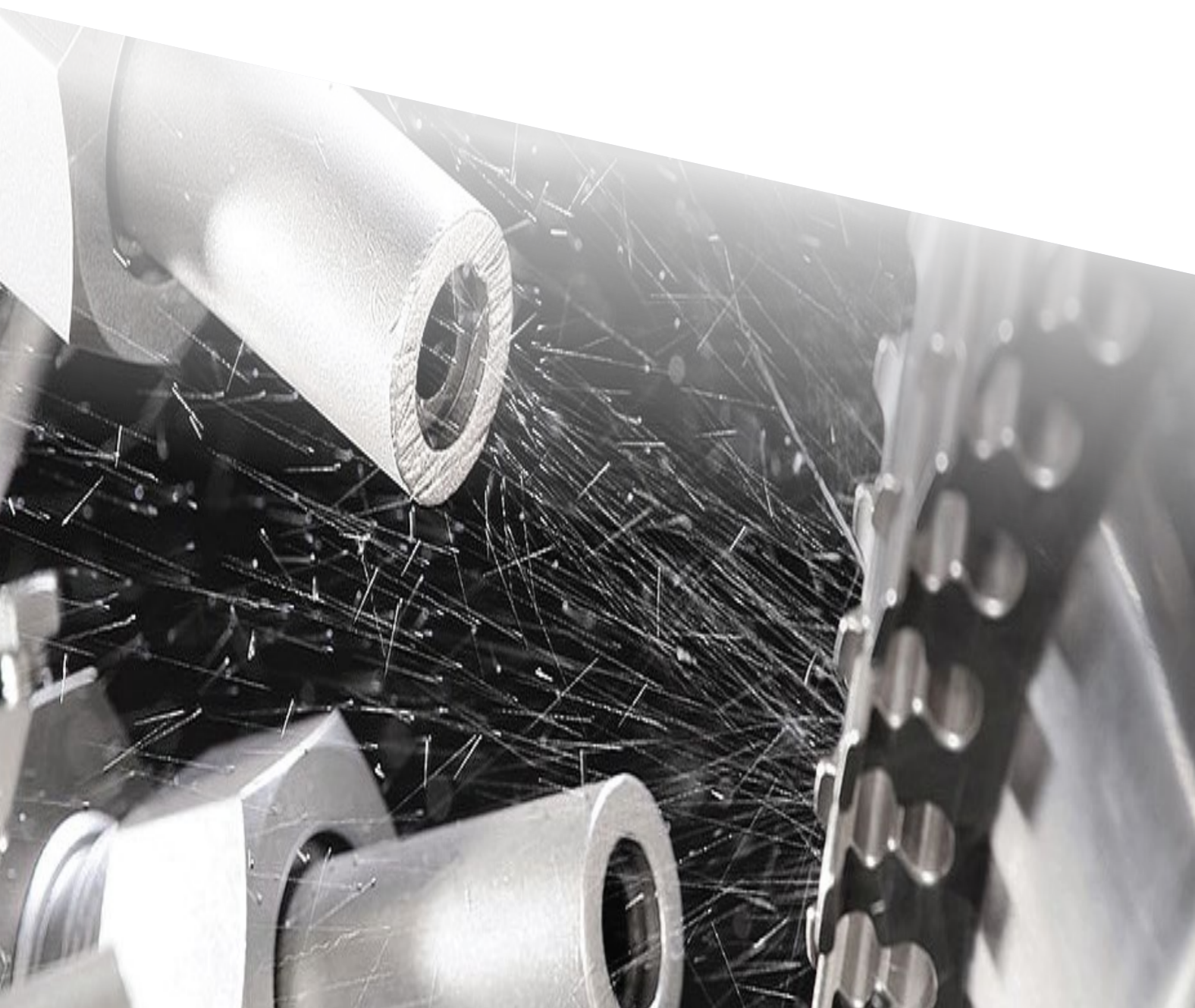


SHOT BLASTING

Size to Work On:

INLET & OUTLET ROLLER CONVEYOR:

Length : 12 meters
Working width : 2500 mm



PNEUMATIC PAINTING BLASTROOM

Functions & Capacities:

INTERNAL DIMENSIONS

Length : 30 meters
Width : 6.0 meters
Height : 6.0 meters



HANDLING & LIFTING

SAMIF

30



HUGE & HEAVY

SAMIF is equipped to lift and handle enormous amount of strength required to carry extra heavyweight materials and products.



OVERHEAD, GANTRY AND SEMI-GANTRY CRANES

Total Nos : 23
Range : 60 to 100 Metric Tons

BATTERY-OPERATED CARTS

Total Nos : 11
Range : up to 100 Metric Tons



SAAD ALI ALESSA METAL
INDUSTRIES COMPANY.

PROJECT Gallery

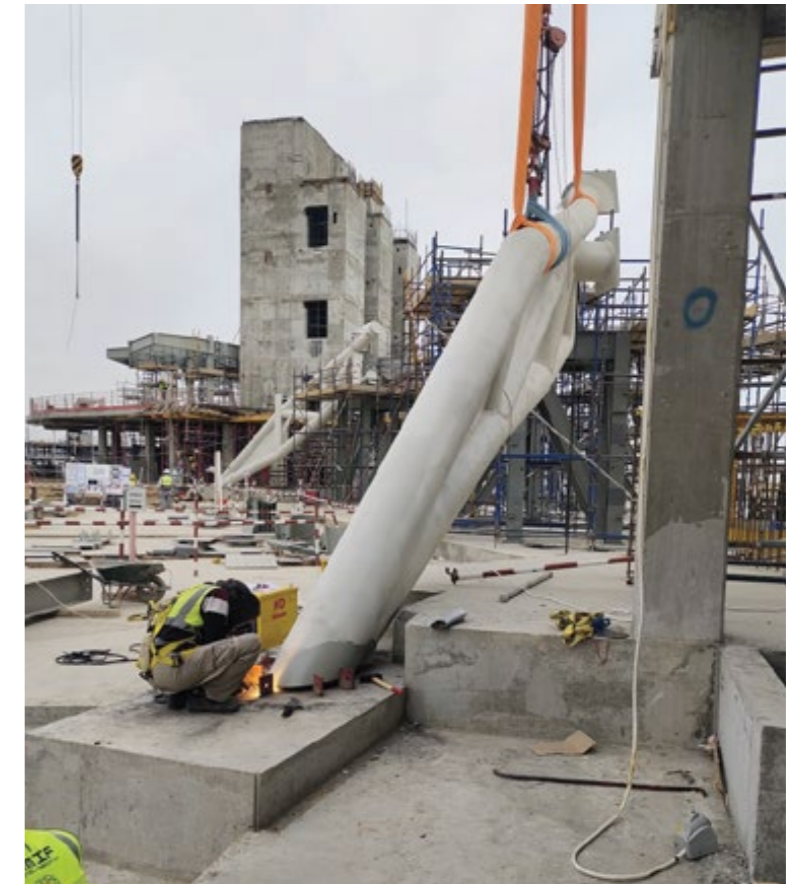


AMAALA YACHT CLUB



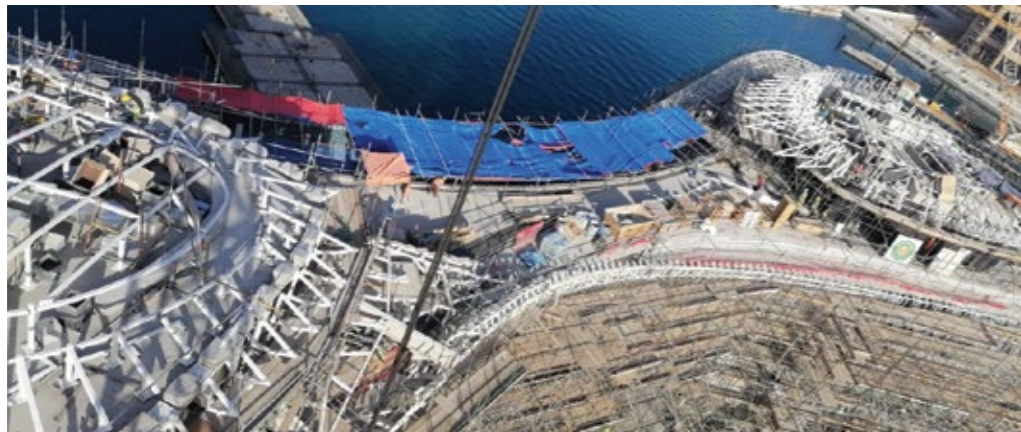
Project : Marina Village Amaala Yacht Club at Amaala

Scope: design verification, Supply, Fabrication, Fire-proof painting erection of 2400 tons of steel structure.



Client : Baytur

Location: Red Sea.



DRY COOLING SYSTEM



Project: WAS PHOSPHATES PROJECT "Dry cooling system".
Scope: Detailing, Supply, Fabrication, Painting of Steel Structure and Ducts.



Client: COX Energy / SPG



MMSC IOC FACILITY

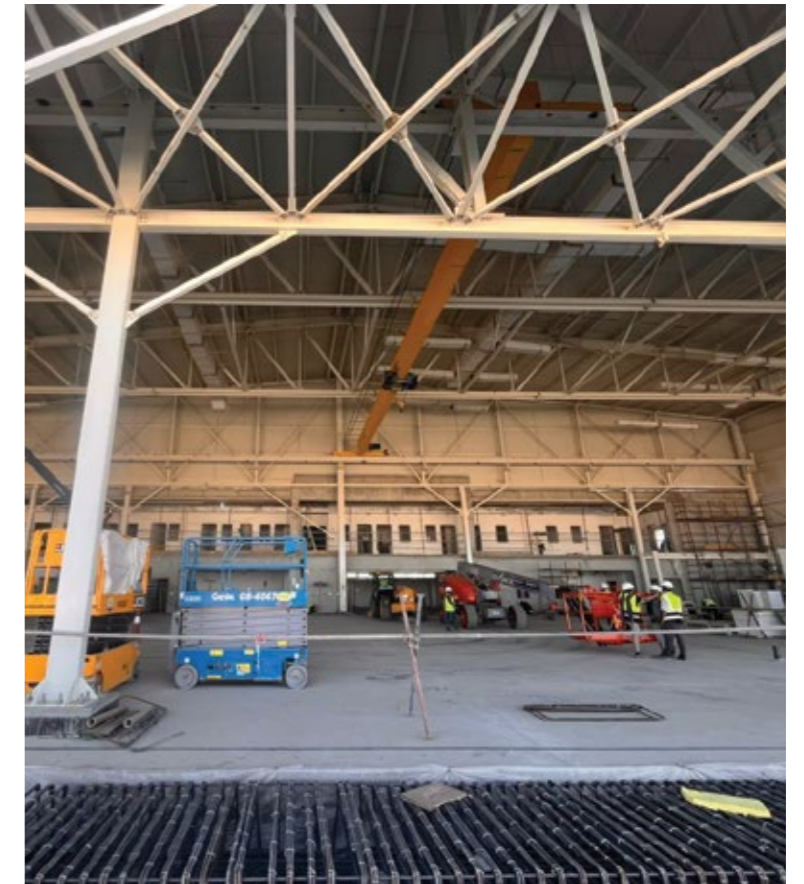


Project: MMSC IOC FACILITY– KING ABDUL AZIZ
NAVAL BASE
Scope: Fabrication and supply of 1900 tons of steel
structure.



Client: ARCIRODON
Location: JUBAIL
End user : KING SALMAN NAVAL BASE

MRO FACILITY AIRPORT LANDSIDE



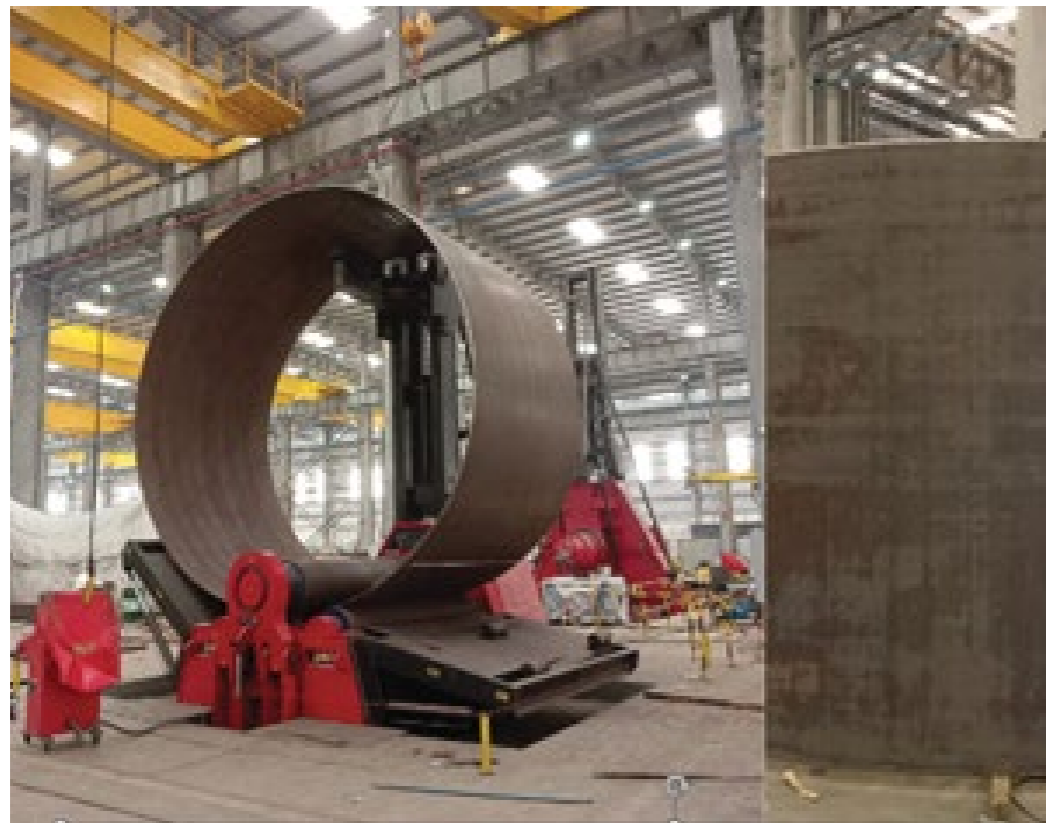
Scope : Fast track design and built project consist of execute airplanes Steel structure maintenance hager with two stories admin building with area of 3000 m2 , relocation another hager and land scape.
SOW including earth work, Concrete works, steel structure.



Client: Red Sea Global

Location: Red Sea

K.O. DRUMS & COMBUSTION CHAMBER



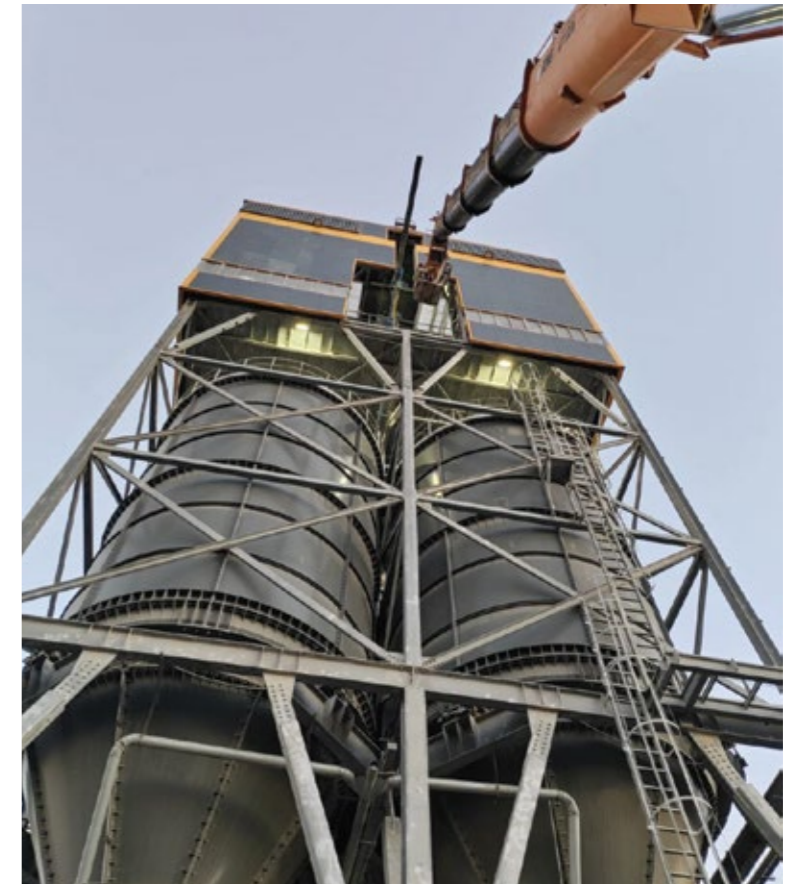
Project: Dammam Sweet Gas & GOSP

Scope: Design, Supply, Fabrication, Painting of

- Drill Site A & B Knock Out Drums
- Drill Site A & B Combustion Chamber



ANTHRACIT DRYING



Project: ANTHRACIT DRYING

Scope: Design, Supply, Structural Steel – Fabrication & Erection

Client : EMDAD

Location: RAS ALKHAIR

RADAR TOWER- MAWANI PROJECT



Project: Radar Tower- Mawani Project

Scope: Design, Supply, Fabrication, Coating and Erection

+200 Tons



Client : SAMI

Location: Yanbu

BOULEVARD RIYADH BRIDGES SUPPLY & FABRICATION

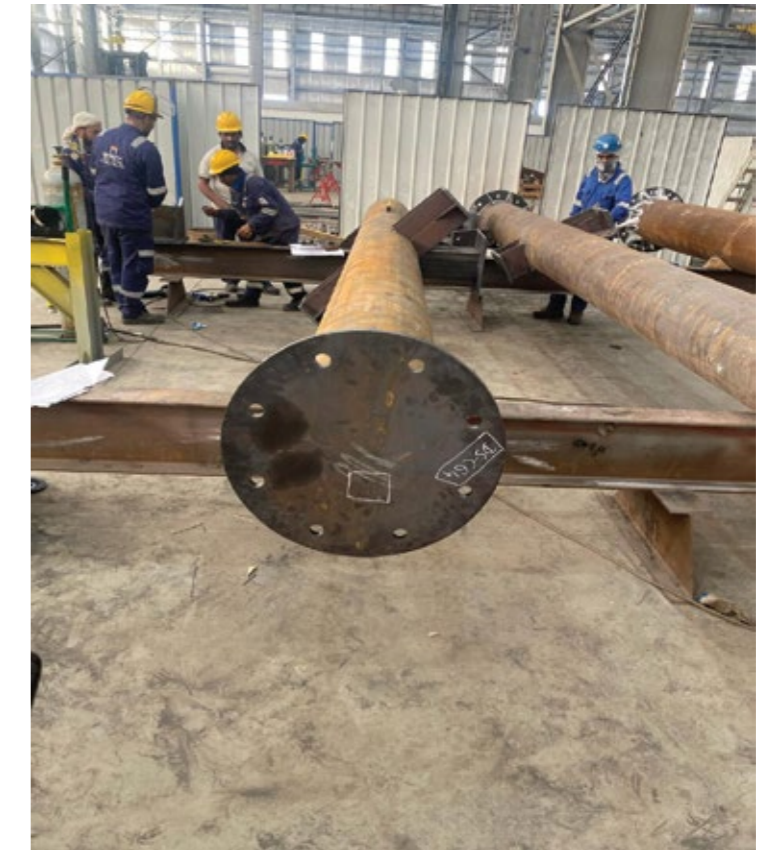
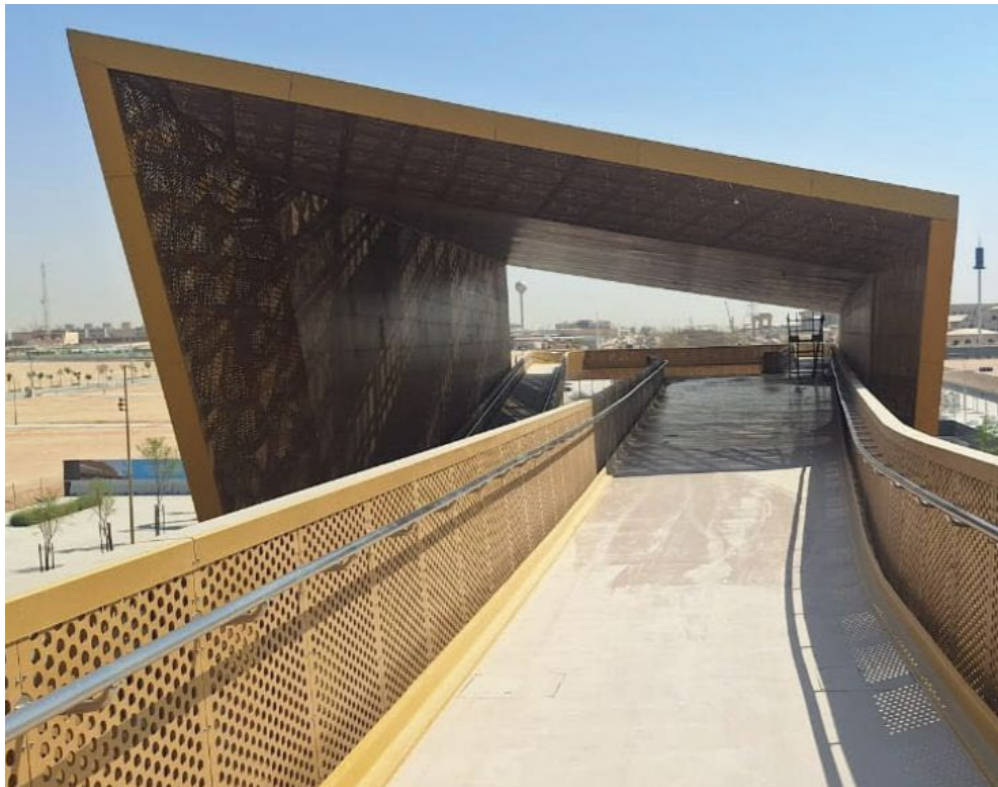




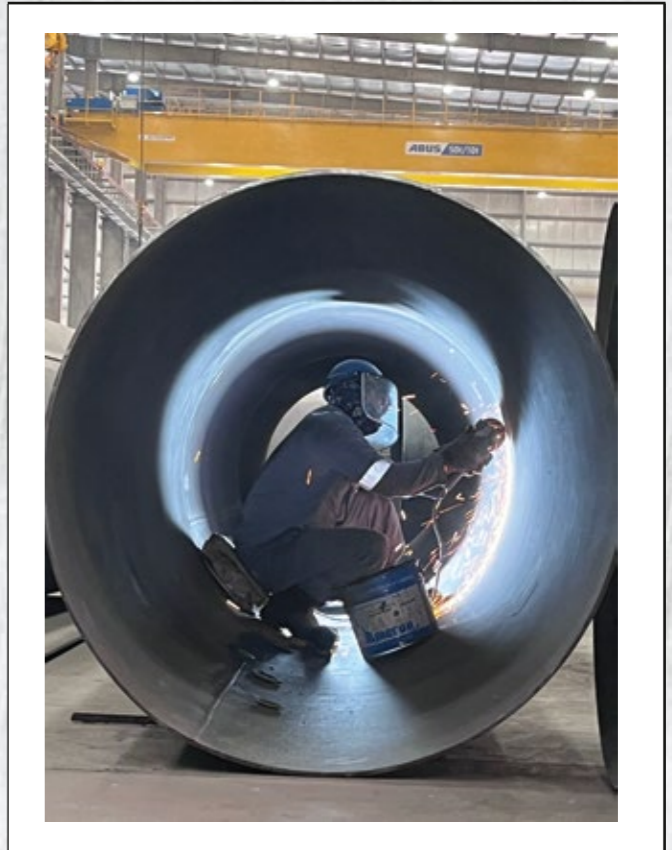
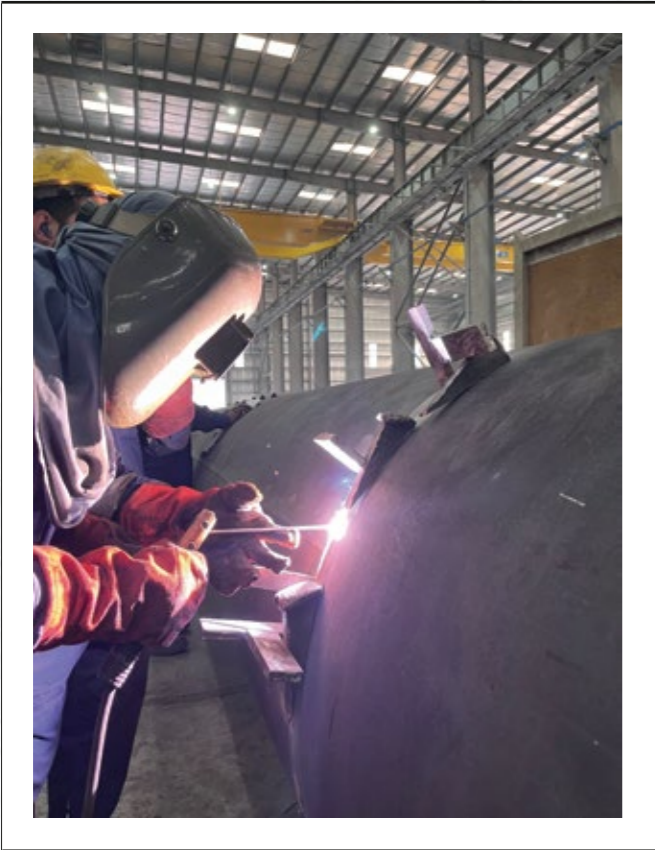
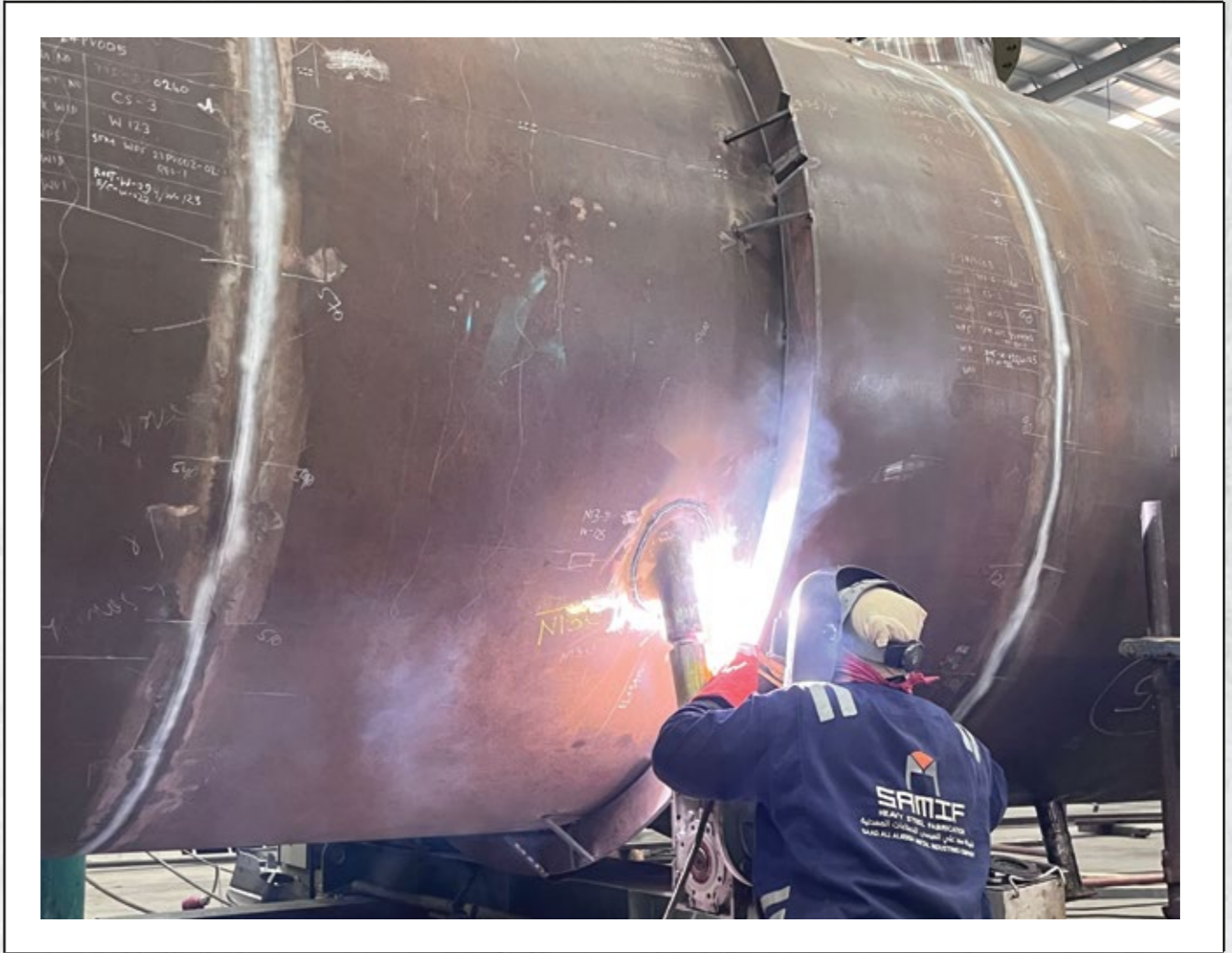
PHOTO Gallery

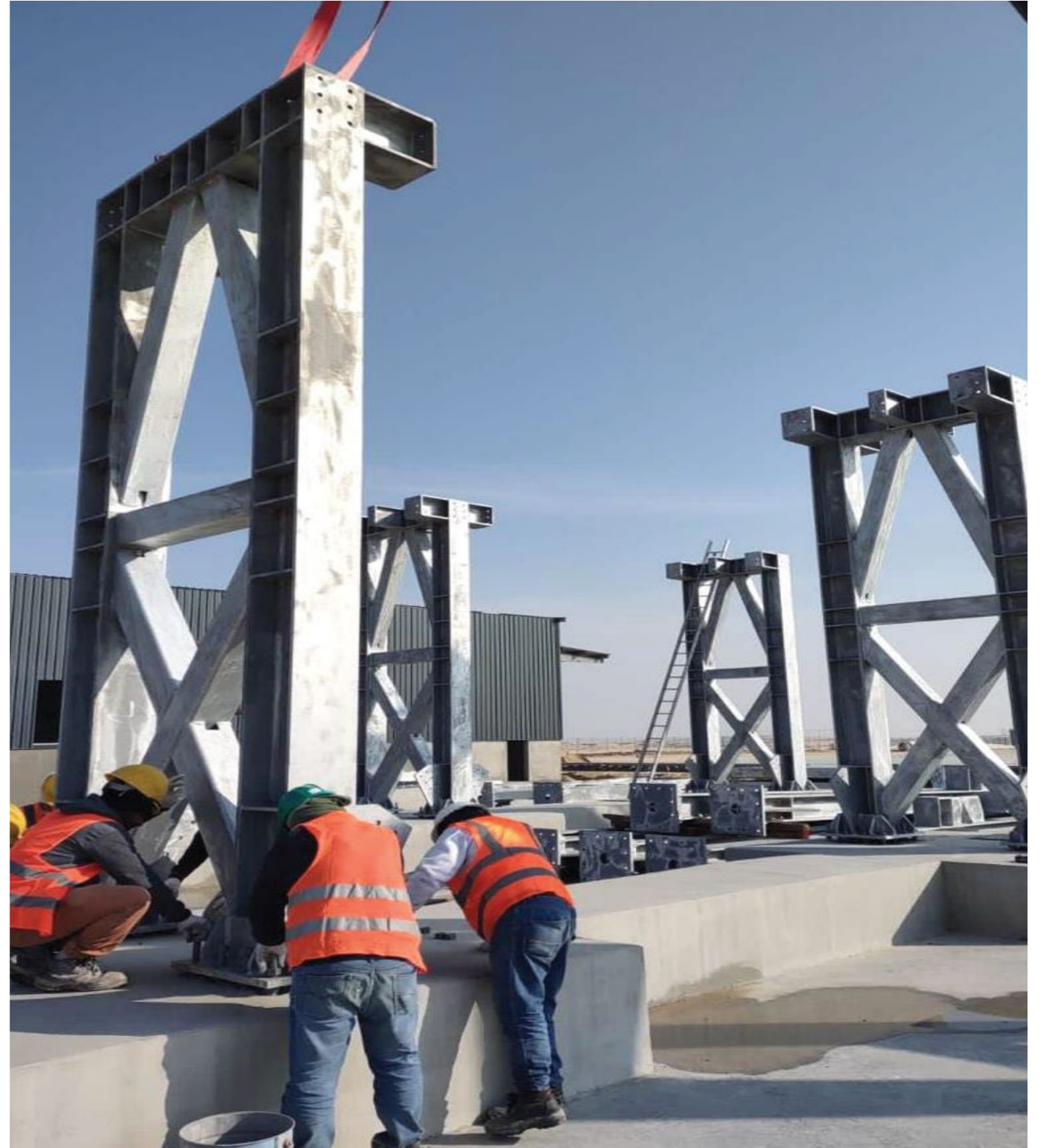
**SAAD ALI ALESSA METAL
INDUSTRIES COMPANY.**

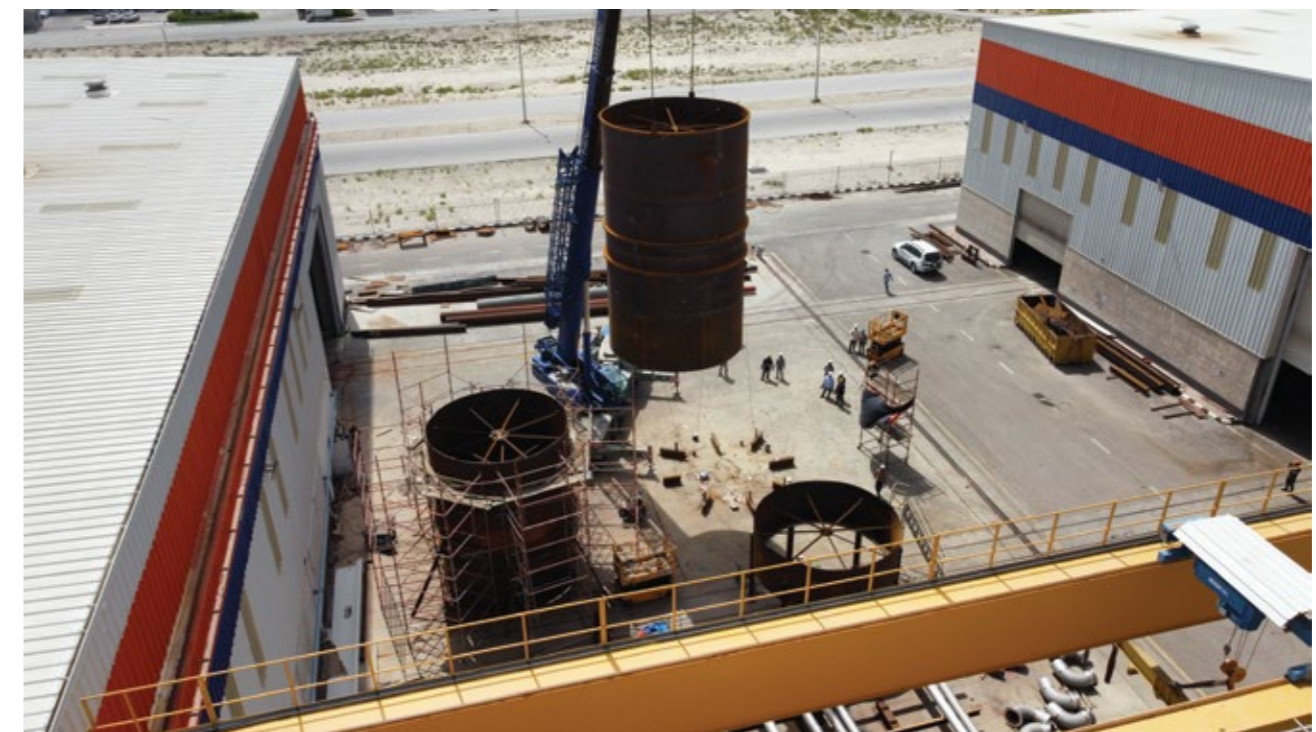
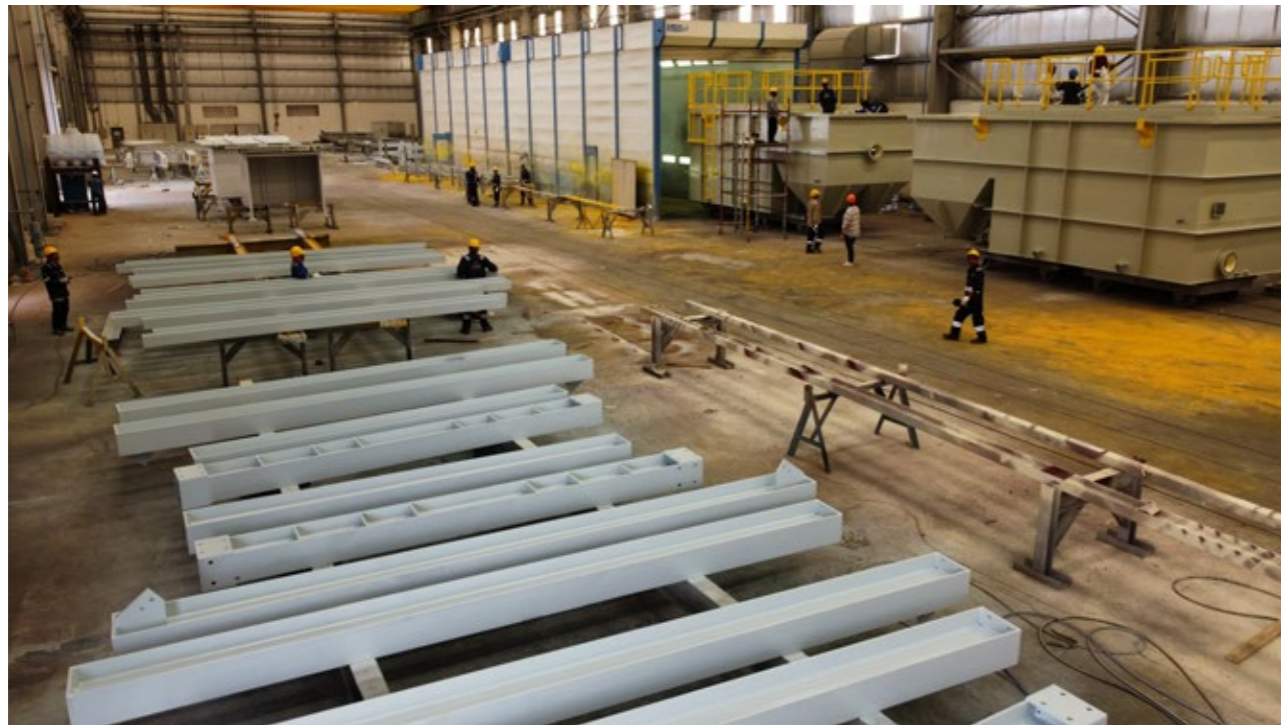




















ACROSS THE KINGDOM AND BEYOND

Our expertise are felt across
the kingdom and further
beyond MENA and other
global locations.



For General Inquiries
Please Contact Us at : sales@samif-fab.com

Muhammed Saquib

Sr. sales & Markrting Engineer
+966592582680
saquib@samif-fab.com

Ahmed Assem

Sr. Sales Engineer
+20 114 950 0740
ahmedassem@samif-fab.com

Mona Elwan

Sr. Sales & Marketing Engineer
+20 111 665 8510
monaabdelkhalek@samif-fab.com

Mohamed Al Attar

Corprate Director for Sales & Markrting
m.alattar@emkanholding.com
sales@samif.com
sales@petro-v.com



Saad Ali Alessa Metal Industries



Technology powered by its ingenuous and collaborative team, right materials and right application provides high efficiency and customer-satisfaction to our deliverables.

+966592582680

sales@samif-fab.com
info@samif-fab.com

7727 - 3RD Industrial City,AD Dammam 2224 - 34856,
Unit No3,Kingdom of Saudi Arabia

www.samif-fab.com

© 2025 SAMIF - ALL RIGHTS RESERVED - EMKAN MEDIA CENTER 2025

